

Filippi

FILIPPI F51

To optimize your crew's speed it is essential that they row in a boat that is designed for their weight. With a range of more than 55 different moulds, almost every crew can find the boat that better fits their needs.

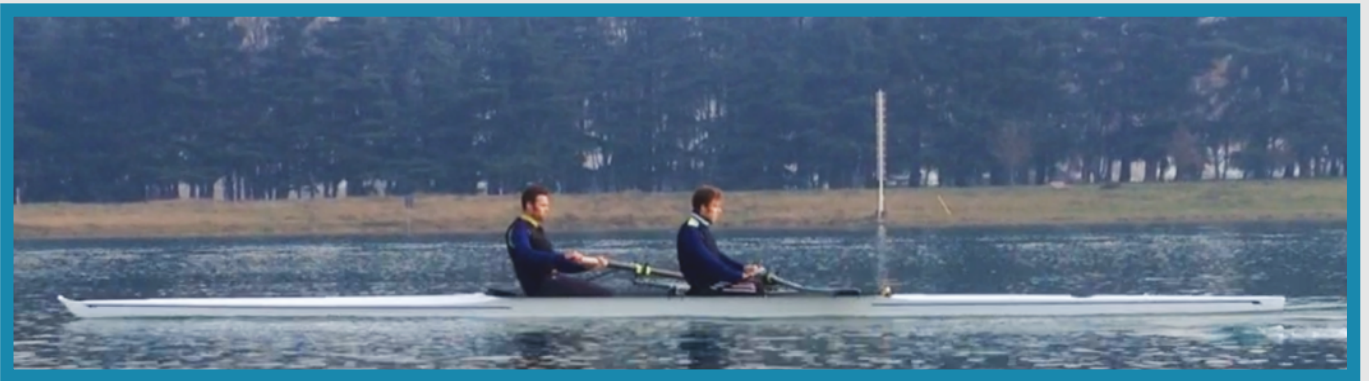
2x/2-

F51 (85-100 Kg; 10.14 m long)

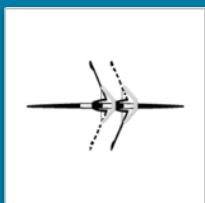
The F51 comes from the F17 mould design; optimized for higher weights and sweep rowing. Optimal choice for rowers over 90 Kg.

A growing stroke rate, combined with the gliding characteristic of this hull, lead to a fast velocity increase. A good rowing technique and crew's coordination is essential to take advantage of this high potential racing shell.

More features are: U cross-section and significant stern volume that compensate the natural tendency to sink at the catch.



boat class



*Specifications:

Length: mt 10.14

Width: cm 39.7

Athlete: Kg 85-100

* ALL DIMENSIONS ARE GIVEN FOR INDICATIVE PURPOSES ONLY

2x/2-

MATERIALS: CARBON, KEVLAR, TITANIUM, HONEYCOMB, HEXMC, ALUMINIUM ALLOY

ALL BOATS CAN BE SUPPLIED WITH: ALIANTE CARBON OR ALUMINIUM RIGGERS, CARBON WING RIGGERS, ALUMINIUM WING RIGGERS, TUBULAR CARBON RIGGERS, STANDARD ALUMINIUM RIGGERS.

